



Packaging – the streamlined approach



www.zarges.com

**Modern packaging solutions
for transport and storage**

A close-up photograph of a silver metal frame with blue plastic components. A black and blue ZARGES EUROBOX is mounted on the frame. The box has a blue label with the ZARGES logo and the text 'ZARGES EUROBOX'.

Mission statement, our goal ...

ZARGES Logistics Equipment – made by professionals for professionals.

Whatever your application: manufacturing, packaging, storage, transportation, organisation or protection: ZARGES Logistics Equipment has the optimum solution. We offer tried and tested, well thought-out and practical solutions with the high quality and lasting value required in professional applications.

In addition, we have an extensive range of accessories for a wide variety of requirements. Constant availability and continuing supply of spare parts ensure that you do not lose valuable time in the execution of your work.



Boxes	from page	4
Eurobox	page	4 – 8
ZARGES Box	page	9
Eurobox and ZARGES Box accessories	page	10 – 16
Special boxes	from page	17
Transport Box K405	page	17
Mobile Box K415	page	18
Rollbox K412	page	19
Toolbox	page	19
Cases	from page	20
P472 case	page	20 – 22
Service and attaché cases	page	23
Containers and baskets	page	24
Dolly trolleys	page	25
Box trolleys	page	26
Recyclables collections system	page	27

Boxes
page 4 – 16

Special boxes
page 17 – 19

Cases
page 20 – 23

Containers and baskets
page 24

Dolly trolleys
page 25

Box trolleys
page 26

**Recyclables
collections system**
page 27



The logo is an orange octagon with the words "ZARGES" and "INNOVATION" in white, stacked vertically.

ZARGES
INNOVATION

We can improve on good

Fasteners and handles that are even easier to operate and with longer service life!

➔ Easier to access wearing gloves

The handles are 10 % wider, making it even easier to grip them when wearing gloves.

➔ More ergonomic with a wider hand rest

Wider and thicker gripping surfaces mean that the cases are even easier to handle and can be carried for longer periods without tiring.

➔ Optimum safety and extremely comfortable handling

The handles of the ZARGES cases proved their strength when tested against other comparable products: The reinforced handle plate means that the handles will not be bent upward by more than a defined angle, even under the heaviest loads. This ensures reliable protection against injury caused by the hands getting pinched in the handle.





➔ **Service life – tested 20 000 times and still holding their own**

When it has been operated 5 000 times, a conventional fastener has lost around 80 % of its clamping force. The consequence: the case lid may come open during transportation.

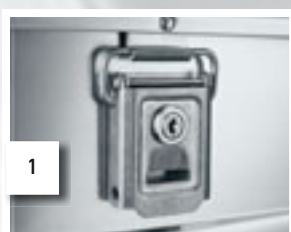
In the same period of time, the new ZARGES Comfort fastener has lost only 20% of its clamping force, and thus its service life is much longer.

These results were confirmed in our own test laboratory in numerous fatigue tests. This increased service life is a feature unique to the new ZARGES Comfort fastener.

The new ZARGES container fasteners are protected by EU-wide utility patents!

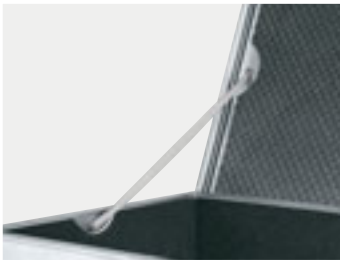
➔ **Tailored to your needs – more variety in Comfort fasteners**

The new ZARGES Comfort fasteners can be equipped with a lock or with spring anti-opening feature. It can also be secured with a shackle lock or lead seal.



➔ **Possible combinations:**

1. Fastener with integral lock
2. Fastener with spring anti-opening feature
3. Fastener with shackle lock
Order No. 46 989
4. Fastener with spring anti-opening feature and integral lock



2 durable lid straps.

Sealed at the ends to prevent fraying. Will not tear out even under heavy loads. Attached with special rivets (with oversize heads).



All riveted joints with full solid rivets.

Stacking corners with high load bearing capability

Stainless steel hinges



Lid with foamed seal allround.

Protected against wear, overloading, squashing and permanent deformation. High elasticity protective peripheral foam seal in the lid.



Drop handles with return spring (stainless steel) and plastic grip, ergonomic and heavy-duty.



Edge, base, lid profile frames made of solid profile sections,

with joints fully welded, joined permanently through high-strength positive locking and swaging.



Corner beading for enhanced stability.



Aluminium / stainless steel snap fastener / hook.

Corrosion resistant, can be secured with lead seals, plug or shackle lock up to a shackle thickness of 6 mm, optional spring anti-opening feature.

Quality from the market leader – Advantages that speak in favour of ZARGES!

Taking the Eurobox as an example, the essential advantages offered by ZARGES in terms of product design and quality are clearly evident.

Eurobox

The ZARGES universal box. With cleverly thought-out system accessories, the best solution for packing, storage and transportation.



Details

- Rugged aluminium universal container.
- Dust and spraywater protection because of circumferential foam lid seal.
- Fitted with two sturdy lid holding straps.
- Secure stacking thanks to stacking corners made of impact-resistant plastic.
- High level of stability due to lid, edge and base profile frames made of fully-welded aluminium profiles.
- Corner beads for additional dimensional stability.
- Solid workmanship for a long life cycle and high stacking and capacity loads at low dead weight.
- ZARGES Comfort fasteners for ergonomic usability and extremely long life cycle.
- Can be secured with a plug lock, lead seals, or a padlock (max. shackle diameter 6 mm).
- The locking devices can also be retrofitted for additional security with an the anti-spring open feature.
- ZARGES Comfort handles for ergonomic handling and loads up to 50 kg.
- High corrosion resistance due to stainless steel fittings

Special feature

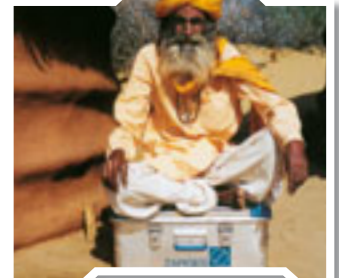
Order No. 40700 is fitted with a handle on the lid.

Order No. 40709 is fitted with 2 handles on each end face.

Order No. 40701 and 40710 are fitted with 3 handles.

Order No.	see No.	Inside dimensions (L × W × H, approx. mm)	Outside dimensions (L × W × H, approx. mm)	Volume (approx. l)	Weight (approx. kg)
40 700	1	350 × 250 × 310	400 × 300 × 340	27	3.0
40 701	2	550 × 350 × 220	600 × 400 × 250	42	4.7
40 702	3	550 × 350 × 310	600 × 400 × 340	60	4.9
40 703	4	550 × 350 × 380	600 × 400 × 410	73	5.2
40 704	5	750 × 350 × 310	800 × 400 × 340	81	6.1
40 705	6	750 × 550 × 380	800 × 600 × 410	157	7.5
40 706	7	750 × 550 × 580	800 × 600 × 610	239	8.9
40 709	8	1150 × 750 × 480	1200 × 800 × 510	414	13.0
40 710	9	1150 × 250 × 220	1200 × 300 × 250	63	6.3

Clearance dimension approx. 30 mm less than inside dimension.



Boxes

Eurobox

Order No.	see No.	Inside dimensions (L × W × H, approx. mm)	Outside dimensions (L × W × H, approx. mm)	Volume (approx. l)	Weight (approx. kg)
40 707	1	550 × 350 × 310	600 × 400 × 340	60	5.5
40 708	2	750 × 350 × 310	800 × 400 × 340	81	6.7

Clearance dimension approx. 30 mm less than inside dimension.



Eurobox (as described on page 7) but with additional toolbox fittings:

- Aluminium corners internally for plastic inserts.
Order No. 40 624/40 625
- Armoured hasps for shackle lock
(up to 8 mm shackle diameter).

Plastic inserts

- Made of blue PS, incl. 2 dividers, to fit 40 707/40 708.



- Size: 315 × 170 × 60 mm

Order No. 40 624



- Size: 515 × 155 × 60 mm

Order No. 40 625

Combination possibilities

Order No.	Plastic inserts 40 625	Plastic inserts 40 624
40 707	4 ×	–
	2 ×	3 ×
	–	6 ×
40 708	–	4 ×
	2 ×	1 ×

ZARGES Box

Tools or sensitive devices, servicing and installation equipment, important work documents or high-quality components – a ZARGES box can hold literally anything. Safe, clean and protected.

- Aluminium universal case.
- Lid with stainless steel hinge, two lid straps and allround seal.
- Self-locking lid.
- Edge, lid and base profile frames made of solid profile sections.
- Profile-section joints fully welded.
- Corner beads for additional dimensional stability.
- Snap fasteners with plug locks; additional locking by lead seals or padlock (max. shackle diameter 6 mm) possible.
- Ergonomic heavy-duty sprung drop handles.
- Clearance dimension approx. 30 mm less than inside dimension.



Order No.	see No.	Inside dimensions (L × W × H, approx. mm)	Outside dimensions (L × W × H, approx. mm)	Volume (approx. l)	Weight (approx. kg)
40 861	1	550 × 350 × 220	600 × 400 × 240	42	4.0
Mini-Box (Front-mounted handle)					
40 877	2	550 × 350 × 310	600 × 400 × 330	60	4.5
Mini-Box "Plus"					
40 862	3	750 × 350 × 310	800 × 400 × 330	81	5.5
Midi-Box					
40 863	4	850 × 450 × 350	900 × 500 × 370	135	6.9
Maxi-Box					

Clearance dimension approx. 30 mm less than inside dimension.

Boxes

Eurobox and ZARGES Box accessories



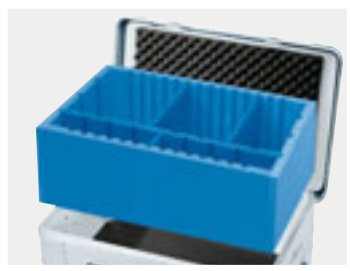
Box for small components

- Complete with 21 divider inserts made from PP. Systematic organisation for small items.
- The organising system for small parts for fitting by the customer.
- Fits Eurobox 40 701 – 40 704, ZARGES Box 40 861 – 40 863, 40 877.
- Dimensions (L × W × H): 430 × 330 × 60 mm.
- **Order No. 40 628**



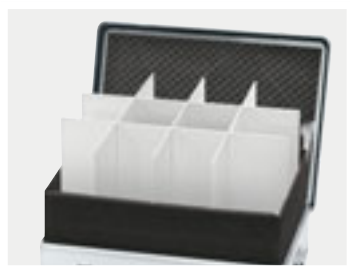
Adjustable aluminium divider panel set

- Consisting of a divider panel with 2 notched bars for even better organisation.
- **Set 1**
Fits:
40 701– 40 704, 40 861, 40 877, 40 862
Dimensions (W × H): 346 × 215 mm
Order No. 40 864
- **Set 2**
Fits: 40 702 – 40 704, 40 877, 40 862
Dimensions (W × H): 346 × 305 mm
Order No. 40 865
- **Set 3**
Fits: 40 863
Dimensions (W × H): 446 × 345 mm
Order No. 40 866



Divider panel system 1

- The individual organisation system for large items, made of high-quality foam, for fitting by the customer.
- Including base foam and nubby foam in the lid.
- For all Euroboxes and ZARGES Boxes with inside dimensions 550 × 350 mm (L × W).
- Dimensions (L × W × H): 550 × 350 × 190 mm.
- **Order No. 40 730**



Divider panel system 2

- Foam ring and base panel in PE foam Ethafoam 220.
- Nubby foam for lid, self-adhesive.
- Compartment set in Kömatex (foamed PVC), sheet thickness 5 mm, consisting of 2 lengthwise and 3 transverse partitions. Lengthwise and transverse partitions can be inserted as required.
- Size of the compartments approx. 170 × 170 mm.
- For all Euroboxes with inside dimensions 750 × 550 mm (L × W).
- Dimensions (L × W × H): approx. 750 × 550 × 330 mm.
- **Order No. 40 731**





Toolbag

- A portable, detachable storage bag for tools.
- It is made of hard-wearing fabric and is for fitting by the customer.
- For all Euroboxes and ZARGES Boxes from inside dimensions 550 × 350 mm (L × W).
- Dimensions (L × W): 435 × 260 mm.
- **Order No. 40 627**



Attaché insert

- A practical folder for documents and working utensils, it is made of hard-wearing fabric and is for fitting by the customer.
- For all Euroboxes and ZARGES Boxes with inside dimensions 550 × 350 mm (L × W).
- Dimensions (L × W): 430 × 290 mm.
- **Order No. 40 626**



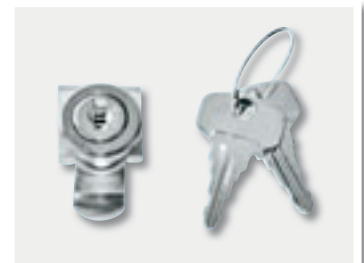
TSA shackle lock

- Shackle lock with 3-digit, freely selectable number combination.
- The shackle lock can be opened by American TSA staff without it being damaged.
- **Order No. 46 789**



Shackle lock

- Shackle lock with 3-digit, freely selectable number combination.
- Shackle diameter 5 mm.
- **Order No. 46 989**



Lock set

- For all boxes designed to be equipped with locks in snap fasteners.
- Consisting of 2 locks and 2 keys.
- Only identical locks in one set.
- **Order No. 40 832**
- Complete series of identical locks.
- **Order No. 40 833**



Catch spring retention (anti-opening feature)

- For all cases with Comfort fastener only
- **Order No. 40 834**

Boxes

Eurobox and ZARGES Box accessories



Foam lining

- On request, all Euroboxes can be supplied with a durable, abrasion-resistant lining made from PE foam.
- Base and wall sections made from Plastazote LD 45, (specific gravity 45 kg/m³, thickness 11 mm), lid lined with PU nubbly foam.
- Other materials and wall thicknesses on request.
- **Order No. see table**

Order No.	For	Dimensions (L × W × H, approx. mm)
43 861	40 700	350 × 250 × 310
43 863	40 701, 40 861	550 × 350 × 220
43 864	40 702, 40 877	550 × 350 × 310
43 865	40 703	550 × 350 × 380
43 876	40 704, 40 862	750 × 350 × 310
43 877	40 705	750 × 550 × 380
43 878	40 706	750 × 550 × 580
43 883	40 710	1150 × 250 × 220
43 884	40 709	1150 × 750 × 480

WWW.ZARGES.COM





Pick 'n' Pluck foam set

- Pre-cut flexible-foam inserts made from open-cell PU foam.
- The fast and simple solution for individual items or small batches. Shape can be changed without tools.
- Sheet thicknesses in the set: 2 sheets each of 30 mm and 60 mm, nubby-foam lid insert 30 mm, base foam 10 mm.
- Including adhesive.



- **Set 1**
Fits 40 700 – 40 703, 40 861, 40 877
Dimensions (L × W × H):
550 × 350 × 220 mm
Order No. 40 735
- **Set 2**
Fits 40 704 – 40 706
Dimensions (L × W × H):
750 × 550 × 220 mm
Order No. 40 736
- **Set 3**
Fits 40 710
Dimensions (L × W × H):
1150 × 250 × 220 mm
Order No. 40 737



Individual foam inserts

- We manufacture tailor-made foam inserts in a large range of materials to provide perfect protection and functionality geared specifically to the goods you are transporting.
- One of the special features of these top-quality foams is that it is possible to calculate in advance the degree of protection which will be provided by the finished packaging.
- On the basis of weight, surface area, drop height and sensitivity of the goods (G value), we develop for you packaging with the optimum padding thickness. The result: lowest possible raw material requirements with maximum protection.
- On request, we can also supply inserts with antistatic finish or dissipative design.

Boxes

Eurobox and ZARGES Box accessories



Clip-on castors

- Mobility for all models from inside dimensions 550 mm x 350 mm upwards.
- Tool-free installation.
- Made of solid rubber, Ø 100 mm, swivel castors fitted with wheel brakes.
- Load capacity up to 90 kg on 4 castors.



→ 2 fixed castors

each with a clamping mechanism
1 x left and 1 x right.

Order No. 40 741

→ 2 swivel castors

each with clamping mechanism
1 x left and 1 x right.

Order No. 40 742

Configuration recommendations:

- 2 swivel castors (1 x Order No. 40 742) and 2 fixed castors (1 x Order No. 40 741) or
- 4 swivel castors (2 x Order No. 40 742)



Add-on castors

- 2 castors and hardware made from high-quality polyamide, Ø 75 mm.
- Simple assembly.
- Load capability 50 kg/set.
- Ideal for boxes with an outside length of 800 – 1000 mm.
- Delivery includes the required mounting equipment and assembly instructions.
- **Order No. 40 738**





Trolley

- Telescopic trolley.
- For easy fitting by the customer.
- Pull-out and lockable handle.
- Ideal for boxes with an outside length of 600 mm – 800 mm.
- Easy-running running gear, Ø 54 mm.
- Load capacity 30 kg.
- Fits 40 701 – 40 704, 40 707 – 40 708, 40 861 – 40 862, 40 877
- **Order No. 40 739**



Supplementary items for trolley

- Supplementary set enables the trolley to be used with other boxes/cases.
- **Order No. 40 740**



Dolly trolley W 150

- Aluminium chassis, low version.
- Running gear: 2 swivel and 2 fixed castors, Ø 125 mm, 40 mm wide, easy running, rubber wheels, "non-mark-ing", roller bearings, thread guards.
- For further details, see page 25.



Dolly trolley W 152

- Aluminium chassis, high version. H = 450 mm.
- Running gear: 2 swivel and 2 fixed castors, corner-mounted, Ø 125 mm, 40 mm wide, easy running, rubber wheels, "non-marking", roller bearings, thread guards.
- For further details, see page 25.

Boxes

Eurobox and ZARGES Box accessories

Compatibility for Eurobox and ZARGES Box

Order No.	Designation	(Inside dimensions, L × W, approx. mm)						
		350 × 250	550 × 350	750 × 350	750 × 550	850 × 450	1150 × 250	1150 × 750
40 626	Attaché insert	–	✓	✓	✓	✓	–	✓
40 627	Toolbag	–	✓	✓	✓	✓	–	✓
40 628	Box for small components	–	✓	✓	–	✓ ²⁾	–	–
40 730	Divider panel system 1	–	✓	–	–	–	–	–
40 731	Divider panel system 2	–	–	–	✓	–	–	–
40 735	Pick 'n' Pluck foam set 1	✓ ¹⁾	✓	–	–	–	–	–
40 736	Pick 'n' Pluck foam set 2	–	–	✓ ¹⁾	✓	–	–	–
40 737	Pick 'n' Pluck foam set 3	–	–	–	–	–	✓	–
40 864	Adjustable alu divider panel set 1	–	✓	✓	–	–	–	–
40 865	Adjustable alu divider panel set 2	–	✓	✓	–	–	–	–
40 866	Adjustable alu divider panel set 3	–	–	–	–	✓	–	–
40 607	Dolly trolley W150	–	✓	–	–	–	–	–
40 608	Dolly trolley W150	–	–	–	✓	–	–	–
40 680	Dolly trolley W152	–	–	–	✓	–	–	–
40 738	Add-on castors	–	–	✓	✓	✓	✓	–
40 739	Trolley	–	✓	✓	–	–	–	–
40 741	Clip-On fixed castors	–	✓	✓	✓	✓	–	✓
40 742	Clip-On swivel castors	–	✓	✓	✓	✓	–	✓
40 832	Lock set, only identical locks in one set	✓	✓	✓	✓	✓	✓	✓
40 833	Lock set, complete series of identical locks	✓	✓	✓	✓	✓	✓	✓
40 834	Spring anti-opening feature	✓	✓	✓	✓	✓	✓	✓
46 789	TSA shackle lock	✓	✓	✓	✓	✓	✓	✓
46 989	Shackle lock	✓	✓	✓	✓	✓	✓	✓

¹⁾ Cut to size

²⁾ 2 case options



From the South Pole to the desert, ...



... ZARGES boxes are ideal for all applications.

Possible combinations

Order No.		40 626	40 627	40 628	40 730	40 735, 40 736 40 737	40 864, 40 865 40 866
	Description	Attaché insert	Toolbag	Box for small components	Divider panel system 1	Pick 'n' Pluck foam set	Alu divider panel set
40 626	Attaché insert	–	–	–	✓	✓	–
40 627	Toolbag	–	–	–	✓	✓	–
40 628	Box for small components	–	–	–	✓	✓	–
40 730	Divider panel system 1	✓	✓	✓	–	–	–
40 735 40 736 40 737	Pick 'n' Pluck foam set	✓	✓	✓	–	–	–
40 864 40 865 40 866	Alu divider panel set	–	–	–	–	–	–

Note: Combinations depend on the box heights. In some cases, it may be necessary, e. g. to shorten parts of the adjustable divider panel system or to leave out a layer of the Pick 'n' Pluck foam set.

Transport Box K 405



An extremely lightweight transport and storage box made of aluminium.

- Snug fit hinged lid.
- Robust corner joints and aluminium corner reinforcements.
- Beading for increased stability.
- Tension locks with protection against bursting open, lockable, with two keys.
- Ergonomic heavy-duty sprung drop handles.
- Available in three different sizes.
- Can be placed one inside the other when empty for space-saving storage.

Order No.	see No.	Inside dimensions (L × W × H, approx. mm)	Outside dimensions (L × W × H, approx. mm)	Contents (approx. l)	Weight (approx. kg)
43 815	1	480 × 350 × 250	490 × 380 × 255	42	2.6
43 816	2	550 × 400 × 300	560 × 430 × 305	66	3.5
43 817	3	670 × 460 × 400	680 × 490 × 405	123	4.8



Accessories: Pre-cut soft PU foam inlay

Fits 43 815, **Order No.: 43 845**

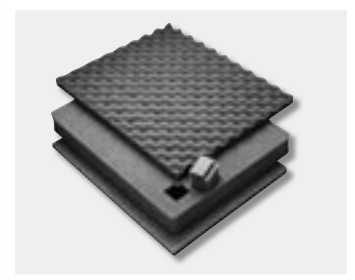
- Sheet thicknesses in the set 2 sheets each of 30 mm and 3 sheets of 50 mm.
- Base foam PU approx. 10 mm; Nubbly foam insert in the lid 25 mm.

Fits 43 816, **Order No.: 43 846**

- Sheet thicknesses in the set 2 sheets each of 30 mm and 4 sheets of 50 mm.
- Base foam PU approx. 10 mm; Nubbly foam insert in the lid 25 mm.

Fits 43 817, **Order No.: 43 847**

- Sheet thicknesses in the set 2 sheets each of 30 mm and 6 sheets of 50 mm.
- Base foam PU approx. 10 mm; Nubbly foam insert in the lid 25 mm.



Special boxes

Mobile Box K415

The light and sturdy packaging solution for mobile applications.

- Stackable aluminium universal container.
- Integrated pull-out handle.
- Equipped with integrated castors with roller bearings, Ø 70 mm.
- Lid with stainless-steel hinges and all-round seal.
- Stacking corners in black plastic.
- Edge, lid and base profile frames made of solid profile sections.
- Profile-section joints fully welded.
- Corner beads for additional dimensional stability.
- Equipped with the new ZARGES Comfort fasteners.
- Fasteners with plug lock as standard.
- Can be secured with lead seals or a padlock (max. shackle thickness 6 mm).
- New ergonomic heavy-duty sprung drop handles.
- Equipped as standard with detachable, water-repellent inner bag made of polyester; completely sealable with all-round zip fastener and welded seams.
- Can carry up to 35 kg total weight.



Order No.	Inside dimensions (L × W × H, approx. mm)	Outside dimensions (L × W × H, approx. mm)	Clear inside dimensions* (L × W × H, approx. mm)	Volume (approx. l)	Weight (approx. kg)
40 855	620 × 490 × 350 mm	655 × 545 × 380 mm	590 × 430 × 350 mm	106	8.6
40 856	740 × 490 × 350 mm	775 × 545 × 380 mm	710 × 430 × 350 mm	127	9.5
40 857	740 × 490 × 450 mm	775 × 545 × 480 mm	710 × 430 × 450 mm	163	10.1

* The clear inside dimensions already allow for the clearance and the pull-out handle, which retracts inside the case. The outside dimensions include the castors.

Accessories



Attaché insert

- Description, see page 11.
- **Order No. 40 626**



Toolbag

- Description, see page 11.
- **Order No. 40 627**



Shackle lock

- Description, see page 11.
- **Order No. 46 989**



TSA shackle lock

- Description, see page 11.
- **Order No. 46 789**

Rollbox K 412



Whether you are an exhibition stand builder, a photographer, a traveller, a travelling salesman, a craftsman, an amateur model builder or a collector – let the functional ZARGES rollbox take the weight off your hands!

- Rolling aluminium universal container.
- With two wheels integrated in one end face, Ø 50 mm.
- Ergonomic heavy-duty sprung drop handles.

Special feature

Order No. 40 851 and 40 852:

- Lid with continuous stainless steel hinge and foamed seal all round.
- Can be stacked safely and centred.
- Snap fasteners with plug locks; additional locking by lead seals or padlock (max. shackle diameter 6 mm) possible.
- Clearance dimension approx. 40 mm less than inside dimensions.

Order No. 43 818:

- Lid with stainless-steel hinges.
- Lightweight version with toggle-type fasteners.
- Clearance dimension approx. 28 mm less than inside dimension.

Order No.	see No.	Inside dimensions (L × W × H, approx. mm)	Outside dimensions (L × W × H, approx. mm)	Volume (approx. l)	Weight (approx. kg)
40 851	1	910 × 365 × 375	950 × 400 × 410	124	9.0
40 852	2	740 × 365 × 375	780 × 400 × 410	100	7.5
43 818	3	735 × 350 × 310	770 × 370 × 335	81	4.0



Shackle lock

- Description, see page 11.
- **Order No. 46 989**



TSA shackle lock

- Description, see page 11.
- **Order No. 46 789**

Toolbox



Toolbox for tradesmen and hobbyists.

- Fold-down front.
- Five pull-out plastic inner compartments.
- One large compartment.
- Wide strip hinge.
- 2 snap fasteners.
- Case corners mounted on lid.
- Comfortable flexible carrying handle.

Order No.	Inside dimensions (L × W × H, approx. mm)	Outside dimensions (L × W × H, approx. mm)	Weight (approx. kg)
40 758	410 × 250 × 230	445 × 260 × 255	3.2

P 472 case – ultimate protection for your equipment



The ZARGES hard-sided case provides the highest degree of protection for sensitive items.

- Unbreakable, stackable hard-sided case made from high quality polypropylene (PP).
- The ideal transport and storage case for highly sensitive items, e.g. electronic and optical devices, measuring instruments, medical technology and biotechnology apparatus, etc.
- Available in more than 40 different sizes which hold up to 331 l.
- Larger models with castors and pull-out handle for easier handling.
- Water- and dust-tight thanks to neoprene seal, to degree of protection IP 67 in most models.
- All cases fitted as standard with automatic pressure compensation valve.
- Can withstand temperatures from -40°C to $+99^{\circ}\text{C}$, resistant to many aggressive substances such as acids and alkalis.
- All metal parts on handles and fasteners made from corrosion-resistant stainless steel.
- Standard colour black, also available in yellow, silver-grey, sand, olive green and orange depending on case type (minimum order quantities apply, other colours on request).



**Model 1450
with frame insert**

Certification:

- Air Transportation Association
- US Military Specifications MIL-C-4150 J
- NATO (NSN)-approved
- DefStan 81-41/STANAG 4280



Robust design

The special design, an open-cell core and tough wall construction protect the Peli cases in spite of their low weight. The many heavy-duty reinforcement ribs offer additional protection. Shocks are absorbed evenly, keeping your equipment safe and sound.

Automatic pressure compensation valve

The automatic pressure compensation valve ensures that pent-up air can escape, but no water can enter. This means that the Peli cases are water-tight and can still be opened easily even after a change in pressure.

Fasteners

The patented design of the two-stage fasteners makes for easy opening and closing of the case with little effort required.

Model	Inside dimensions (L × W × H, approx. mm)	Outside dimensions (L × W × H, approx. mm)	Contents (approx. l)	Weight without insert (approx. kg)	Order No. empty	Order No. with foam	Order No. with divider
1080	325 × 249 × 43	349 × 278 × 65	3,5	1,3	For details, see page 22		
1090	381 × 287 × 49	402 × 333 × 73	1,8	1,5	46 675	46 676	–
1120	187 × 124 × 77	209 × 166 × 90	1,8	0,5	46 800	46 801	–
1150	212 × 149 × 93	235 × 192 × 111	2,9	0,8	46 810	46 811	–
1170	268 × 153 × 80	296 × 212 × 96	1,8	3,3	46 625	46 626	–
1200	238 × 184 × 103	270 × 246 × 123	4,5	1,2	46 820	46 821	–
1300	238 × 184 × 155	270 × 246 × 174	6,8	1,4	46 830	46 831	–
1400	305 × 230 × 131	340 × 295 × 152	9,2	1,8	46 840	46 841	–
1430	344 × 146 × 297	430 × 244 × 341	18,0	3,0	46 730	46 731	46 732
1440 *	434 × 190 × 406	500 × 305 × 457	33,6	6,6	46 720	46 721	46 722
1450	376 × 263 × 152	406 × 330 × 174	15,0	2,5	46 850	46 851	46 852
1470	400 × 268 × 95	424 × 332 × 111	10,2	1,7	46 860	46 861	–
1490	454 × 292 × 105	494 × 354 × 119	13,9	2,3	46 880	46 881	–
1495	479 × 333 × 97	549 × 438 × 124	15,5	3,3	For details, see page 22		
1500	432 × 290 × 155	470 × 357 × 176	19,4	2,9	46 890	46 891	46 892
1510 *	514 × 289 × 193	559 × 351 × 229	28,6	5,1	46 770	46 771	46 772
1520	454 × 324 × 171	486 × 392 × 192	25,2	3,6	46 900	46 901	–
1550	481 × 367 × 197	525 × 436 × 217	34,8	4,8	46 910	46 911	46 912
1560 *	518 × 392 × 229	560 × 455 × 265	46,5	6,9	46 790	46 791	46 792
1600	552 × 427 × 200	616 × 494 × 220	47,1	5,9	46 920	46 921	46 922
1610 *	550 × 422 × 268	627 × 497 × 303	65,9	9,1	46 930	46 931	46 932
1620 *	560 × 432 × 320	630 × 492 × 352	77,4	11,1	46 940	46 941	46 942
1630 *	703 × 533 × 394	794 × 615 × 444	147,0	14,1	46 680	46 681	46 682
1640 *	602 × 610 × 353	691 × 699 × 414	130,0	15,4	46 710	46 711	46 712
1650 *	736 × 454 × 267	781 × 520 × 295	89,2	13,3	46 950	46 951	46 952
1660 *	740 × 525 × 448	800 × 581 × 479	174,0	15,5	46 980	46 981	46 982
1690 *	762 × 635 × 407	847 × 722 × 463	197,0	15,4	46 690	46 691	46 692
0340	457 × 457 × 445	518 × 519 × 489	93,0	10,9	46 740	46 741	46 742
0350 **	508 × 508 × 459	569 × 571 × 540	118,0	11,8	46 750	46 751	46 752
0370 **	610 × 610 × 610	673 × 673 × 642	227,0	14,5	46 760	46 761	46 762
0450	522 × 279 × 321	608 × 375 × 456	46,0	15,0	46 640	46 641	–
0500	887 × 468 × 641	1014 × 595 × 727	266,0	22,7	46 630	46 631	–
0550 ***	1208 × 611 × 449	1296 × 699 × 579	331,0	36,0	46 633	46 634	–
1700 *	910 × 351 × 133	968 × 452 × 155	42,5	7,3	46 960	46 961	–
1720 *	1067 × 343 × 133	1127 × 406 × 156	48,6	7,6	46 780	46 781	–
1730 *	863 × 609 × 317	952 × 689 × 365	164,0	13,6	46 650	46 651	–
1740	1040 × 328 × 308	1121 × 409 × 355	105,0	10,0	46 620	46 621	–
1750 *	1283 × 341 × 133	1343 × 443 × 154	58,2	10,7	46 970	46 971	–
1770	1386 × 396 × 219	1458 × 469 × 285	120,0	17,4	46 623	46 624	–
1780 *	1066 × 559 × 383	1140 × 643 × 419	228,0	17,4	46 660	46 661	–

Important note: The models marked * are equipped with two castors for easier transport. Models 1440, 1510, 1560, 1610, 1620, 1630, 1650, 1660 and 1690 also have a pull-out handle.

Standard colour black, special colours on request. Model 0340 equipped with 4 castors and pull handle. Frame insert for many models from 1120 to 1550 can be supplied.

Peli 1080, 1490 and 1495 dimensions only, for details, see the following pages.

** Matching set of add-on castors (2 fixed and 2 swivel castors) available, Order No. 46 757 (not included in the scope of delivery).

*** Optional equipment comprises heavy duty castors (each designed for up to 113 kilos) and removable pallet lifter for trouble-free transport with a lifter truck.

Cases

P 472 Case laptop case for Notebooks from 12" to 17"

P 472 1080 laptop case for Notebooks up to 12.

- Fits Notebooks up to 312 mm × 236 mm × 36 mm or documents 216 mm × 279 mm or DIN A4.
- The moulded lining made from padded foam (Order No. 46 672) protects Notebooks against impact and scratches.

Order No.	Description	Inside dimensions (L × W × H, approx. mm)	Outside dimensions (L × W × H, approx. mm)	Contents (approx. l)	Weight (approx. kg)
46 671	with Pick 'n' Pluck foam, black	325 × 249 × 43	349 × 278 × 65	3.5	1.3
46 672	with foam lining, black	325 × 249 × 43	349 × 278 × 65	3.5	1.3



P 472 1490 laptop case for Notebooks up to 15.

- With computer base and lid insert, shoulder strap and lockable fasteners.

Order No.	Description	Inside dimensions (L × W × H, approx. mm)	Outside dimensions (L × W × H, approx. mm)	Contents (approx. l)	Weight (approx. kg)
46 880	empty	454 × 292 × 105	494 × 354 × 119	13.9	2.3
46 881	with Pick 'n' Pluck foam, black	454 × 292 × 105	494 × 354 × 119	13.9	2.5
46 882	Computer Case Deluxe	454 × 292 × 105	494 × 354 × 119	13.9	2.2



P 472 1495 CC1 Deluxe Notebook computer case.

- With lid separator, nylon-padded laptop sleeve and accessories compartment, insert with impact protection for computer and shoulder strap made from ballistic nylon. Lock with 3-digit combination included in the scope of delivery.

P 472 1495 CC2 Standard Notebook computer case.

- With compact Pick 'n' Pluck™ foam insert, lid separator and shoulder strap made from ballistic nylon.

Order No.	Description	Inside dimensions (L × W × H, approx. mm)	Outside dimensions (L × W × H, approx. mm)	Contents (approx. l)	Weight (approx. kg)
46 700	empty	479 × 333 × 97	549 × 438 × 124	15.5	3.3
46 701	with Pick 'n' Pluck foam	479 × 333 × 97	549 × 438 × 124	15.5	3.8
46 702	CC1 Deluxe Notebook computer case	479 × 333 × 97	549 × 438 × 124	15.5	3.3
46 704	CC2 Standard Notebook computer case	479 × 333 × 97	549 × 438 × 124	15.5	3.3



P 472 case accessories

- Pick 'n' Pluck foam set made from pre-cut PU foam.
- Divider set, padded, divider panels attached with Velcro, adjustable.
- Individual foam inserts manufactured to customer specifications. Details on request.
- Lid insert for better organisation.
- Shackle lock, **Order No. 46 989**
- Dessicant, **Order No. 46 988**
- Customer specific lettering on request.



Service case

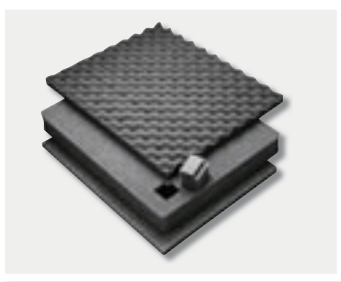


This always helps you to make a good impression.

- Aluminium hard-sided case, anodised, for a wide range of applications.
- Plastic protective strips all round.
- Integral rubber seal to protect against dust and water splashes.
- Riveted wide strip hinge.
- Two locks with protection against bursting open.
- Comfortable carrying handle.

Order No.	Inside dimensions (L × W × H, approx. mm)	Outside dimensions (L × W × H, approx. mm)	Volume (approx. l)	Weight (approx. kg)
40 873	490 × 330 × 130 (90 / 40)*	505 × 365 × 130 (90 / 40)*	20	2.8
40 872	490 × 330 × 160 (90 / 70)*	505 × 365 × 160 (90 / 70)*	24	2.9
40 874	650 × 455 × 190 (120 / 70)*	665 × 490 × 190 (120 / 70)*	55	4.5

* Height (H) divided into bottom section / top section.



Accessories

Order No.	Designation	Compatible with	Dimensions
41 710	Pick 'n' Pluck foam set 1	40 873	Outside dimensions (L × W × H): 490 × 330 × 120
41 711	Pick 'n' Pluck foam set 2	40 872	Outside dimensions (L × W × H): 490 × 330 × 150
41 712	Pick 'n' Pluck foam set 3	40 874	Outside dimensions (L × W × H): 650 × 455 × 180
40 626	Attaché insert	40 872 – 40 874	Outside dimensions (L × W): 430 × 290
40 627	Toolbag	40 872 – 40 874	Outside dimensions (L × W): 435 × 260

Attaché case



- Aluminium hard-sided case, anodised, for varied applications.
- Plastic protective strips all round.
- Integral rubber seal to protect against dust and water splashes.
- Riveted wide strip hinge.
- Two locks with protection against bursting open.
- Comfortable carrying handle.
- Chromium-plated, screwed-on combination lock.
- Scuff-resistant fabric lining.
- Attaché-style compartmentalisation.
- Lid stays open.

Order No.	Inside dimensions (L × W × H, approx. mm)	Outside dimensions (L × W × H, approx. mm)	Volume (approx. l)	Weight (approx. kg)
41 841	490 × 330 × 130 (90 / 40)*	505 × 365 × 130 (90 / 40)*	20	3.1

* Height (H) divided into bottom section / top section.

Containers and baskets

Baskets K 250 / K 251



①



②

K 250 basket (Fig. 1)

- Straight-sided design.
- Robust stacking brackets allow them to be stacked one on top of the other.
- Ergonomic grips in the end faces.
- Plastic skid bars. Plastic skid bars.

Order No.	Inside dimensions (L × W × H, approx. mm)	Outside dimensions (L × W × H, approx. mm)	Contents (approx. l)	Weight (approx. kg)
40 781	540 × 340 × 280	580 × 380 × 300	52	2.5
40 782	700 × 440 × 280	740 × 480 × 300	86	3.5

K 251 basket (Fig. 2)

- Tapered design.
- Can be stacked one inside the other.
- Ergonomic grips in the end faces.
- Plastic skid bars.

Order No.	Inside dimensions (L × W, approx. mm)	Outside dimensions (L × W, approx. mm)	Height (approx. mm)	Contents (approx. l)	Weight (approx. kg)
40 783	top: 700 × 445 bottom: 630 × 375	top: 740 × 485 bottom: 640 × 380	280	89	3.0

Boxes K 270

ZARGES boxes are tried and tested transportation equipment, packaging and practical storage unit rolled into one. Some models are also suitable for use on conveyor belts or roller conveyors.



①

K 270 pharmaceuticals transport container (Fig. 1)

- Universal container made from aluminium, anodised.
- Smooth sides and base.
- Welded side wall.
- Drop handles.
- Special sizes on request.

Accessories

- **Removable stacking lid** with predrilled holes for security seals, **Order No.: 48 014**

Order No.	Inside dimensions (L × W × H, approx. mm)	Outside dimensions (L × W × H, approx. mm)	Contents (approx. l)	Weight (approx. kg)
48 011	540 × 340 × 300	580 × 380 × 325	55	3.9



②

K 270 transport container (Fig. 2)

- Universal box made from aluminium.
- Edge and base profile frames made of solid profile sections, joints fully welded.
- Ergonomic grips in the end faces.
- Can be used on roller conveyors and conveyor belts.
- Coding strips for Destination Guide.
- Matched to pallet dimensions according to DIN 15 141.

Order No.	Inside dimensions (L × W × H, approx. mm)	Outside dimensions (L × W × H, approx. mm)	Contents (approx. l)	Weight (approx. kg)
40 551	720 × 540 × 400	760 × 580 × 425	155	5.3
40 552	720 × 540 × 300	760 × 580 × 325	117	4.6
40 553	720 × 540 × 200	760 × 580 × 225	77	4.2
40 554	540 × 340 × 300	580 × 380 × 325	55	3.0
40 555	540 × 340 × 200	580 × 380 × 225	37	2.5

Dolly trolleys

When it comes to solving “weighty” transportation and storage problems, the highly manoeuvrable ZARGES dolly trolleys are indispensable, economical helpers.

Whether in the high or the low version, they literally make light work of handling and transporting heavy loads comprising individual or stacked ZARGES boxes, containers and baskets.

Dolly trolley W 150 (Fig. 1)

- Aluminium chassis, low version.
- Adapted for the transport of K 270 aluminium containers or K 470/K 450 cases.
- Running gear: 2 swivel and 2 fixed castors, Ø 125 mm, 40 mm wide, easy running, rubber wheels, “non-marking”, roller bearings, thread guards.

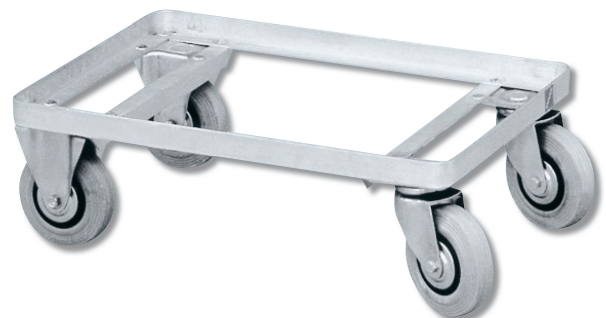
Order No.	For	Outside dimensions of container (L × W, approx. mm)	Weight (approx. kg)
40 607	K 270	580 × 380	5.1
	Eurobox / ZARGES Box	600 × 400 or two cases: 400 × 300	
40 608	K 270	760 × 580	5.5
	Eurobox	800 × 600	



1



2



WWW.ZARGES.COM



Dolly trolley W 152 (Fig. 2)

- Aluminium chassis, high version.
- For the transport of K 250 aluminium baskets, K 470/K 450 cases and K 270 containers.
- Running gear: 2 swivel and 2 fixed castors, Ø 125 mm, 40 mm wide, easy running, rubber wheels, “non-marking”, roller bearings, thread guards.

Order No.	For	Outside dimensions of container (L × W, approx. mm)	Height (approx. mm)	Weight (approx. kg)
40 609	K 250	580 × 380 740 × 480	450	5.9
40 680	Eurobox	800 × 600	450	6.2
	K 270	760 × 580		

Box trolleys

Transport trolley W 182



Sturdy aluminium trolley for versatile use.

- Sturdy edge and base profile.
- End and side walls reinforced with peripheral beading and corner beads.
- Stackable.
- Running gear: 2 swivel and 2 fixed castors, corner-mounted, Ø 125 mm, 40 mm wide, easy running, rubber wheels, "non-marking", roller bearings, thread guards.

Special features

Order No. 40 661:

anodised, with 16 drain holes in centre of floor.

Order No. 40 780:

non-anodised, without drain holes in floor.

Order No.	Inside dimensions (L × W × H, approx. mm)	Outside dimensions (L × W × H, approx. mm)	Contents (approx. l)	Weight (approx. kg)
40 780	700 × 560 × 590	740 × 600 × 760	230	12.0
40 661	700 × 560 × 590	740 × 600 × 760	230	12.0

Transport trolley W 128

Special aluminium trolley, anodised, welded watertight.

- Sturdy edge profile section, smooth inside walls.
- Floor with integrated drainage channels and drain valve for problem-free draining off of liquids.
- Running gear: 2 swivel and 2 fixed castors, Ø 125 mm, 40 mm wide, easy running, rubber wheels, "non-marking", roller bearings, thread guards.



Order No.	Inside dimensions (L × W × H, approx. mm)	Outside dimensions (L × W × H, approx. mm)	Contents (approx. l)	Weight (approx. kg)
40 623	1000 × 700 × 400	1040 × 740 × 765	280	21.0

Steel waste disposal cabinet and Triple-compartment waste collection station, steel

Recyclables collection trolley in cabinet form for 1 – 3 × 60-litre collection tubs (PP or steel)

- Steel body, powder-coated in grey (similar to RAL 7040).
- Front side open, with continuous swing flap for labelling.
- Designed for under-table use.
- Top of cabinet can be used as a storage surface.
- 4 corner-mounted swivel castors, Ø 50 mm, rubber wheels.
- Collection tubs easy to operate and lock, easy to replace.

Note:

- Version in aluminium instead of steel possible (from 30 pieces).



Order No.	Version	Outside dimensions (L × W × H, approx. mm)	Weight (approx. kg)
43 941*	1-container	400 × 585 × 785	14.0
43 942*	2-container	700 × 585 × 785	21.0
43 943*	3-container	1000 × 585 × 785	27.0

* Without collection equipment.

Recyclables collector, Identification plates, LDPE bags

Accessories



PP recyclables collector with lid



Identification plates

PP recyclables collector with lid

Order No.	Fits	Outside dimensions (L × W × H, approx. mm)	Weight (approx. kg)
43 923	43 941 – 43 943, 43 937	550 × 280 × 580	3.0
43 933	Lid for PP bin: 2/3 of front area folds back with hinged connection.		

Steel recyclables case (not illustrated)

Order No.	Fits	Outside dimensions (L × W × H, approx. mm)	Weight (approx. kg)
43 940	43 941 – 43 943	540 × 280 × 590	8.0

Identification plates

Order No.	1 set of plates	consisting of 1 each:
43 944	with labelling	paper, residual waste, biological waste, glass, cardboard, film, metal, plastic
43 945	with pictograms	residual waste, paper / cardboard, glass, tin plate, film / plastic

LDPE bags, blue (not illustrated)

Order No.	Fits 43 923 and 43 940
43 830	11 box containing 10 rolls of 25 bags, thickness 45 µ. Volume: 60 litres

www.zarges.com



Visit us on the Internet!

Comprehensive information on all our product ranges Logistics Equipment,
Access Technology and Aluminium Systems.

ZARGES GmbH

Zargesstraße 7 • D-82362 Weilheim

phone: + 49-(0) 881-687-130 • fax: + 49-(0) 881-687-440

e-mail: industrial.systems@zarges.de • internet: www.zarges.com

We reserve the right to make technical modifications without notice. All measurements and weights are approximate values.

Version: Date of printing. Reproduction of this document, in its entirety or in part, is only permitted with the express approval of ZARGES GmbH.

